

The importance of considering the patient's and treating physician's view to generate comprehensive and unbiased real-world evidence data (PERISCOPE and TELESCOPE)

BACKGROUND

- Erenumab, the only approved fully human CGRP-receptor antibody, has been available in Germany since November 2018. So far limited real world evidence (RWE) data are available.
- Real-World-Evidence can be collected from different perspectives - the patients' and treating physicians' perspective

OBJECTIVE

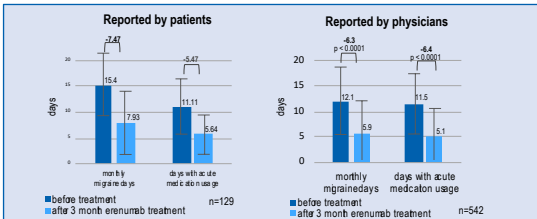
- To highlight the importance of considering the views of both patients and physicians in order to gather comprehensive real-life evidence

METHODS

- Two online surveys (July – December 2019) were conducted in Germany amongst
 - migraine patients regarding their experience with erenumab (PERISCOPE, 90 erenumab patients)
 - migraine-treating physicians regarding their therapy decisions and observations upon erenumab treatment (TELESCOPE, 45 physicians documented 542 erenumab patients)
- Results of these two different cohorts were compared regarding the overall therapy outcome, changes in quality of life and influence of quality of life parameters

RESULTS

Figure 1. Reduction of monthly migraine days and acute medication days



- Both patients and physicians reported a reduction in monthly migraine days after erenumab treatment
- Physicians reported almost the same reduction of days on acute medication as reduction in migraine days in general

Figure 2. Onset of effect

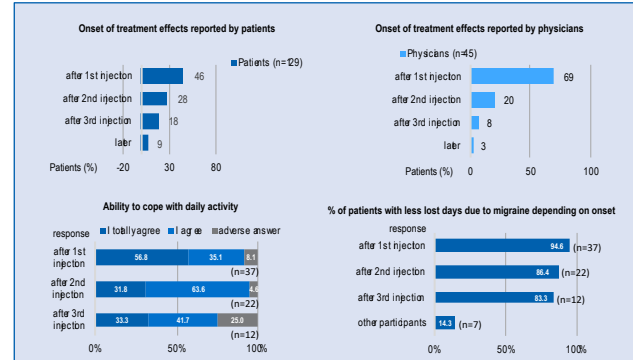
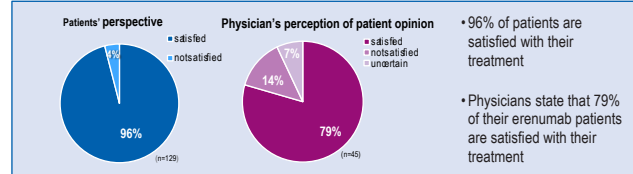
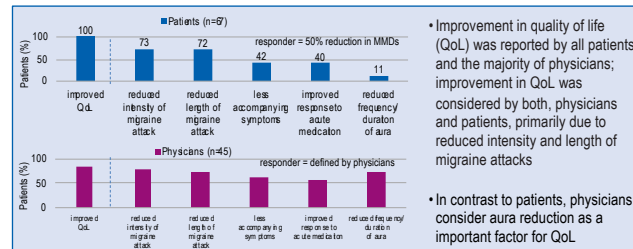


Figure 3. Patient satisfaction



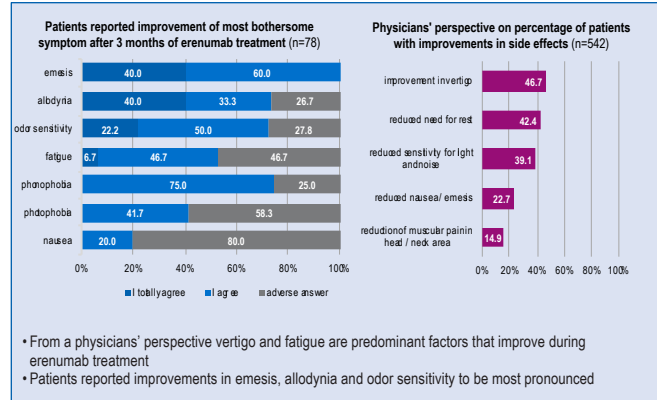
- 96% of patients are satisfied with their treatment
- Physicians state that 79% of their erenumab patients are satisfied with their treatment

Figure 4. Effect on quality of life of responders



- Improvement in quality of life (QoL) was reported by all patients and the majority of physicians; improvement in QoL was considered by both, physicians and patients, primarily due to reduced intensity and length of migraine attacks
- In contrast to patients, physicians consider aura reduction as a important factor for QoL

Figure 5. Erenumab's effect on migraine associated symptoms



- From a physicians' perspective vertigo and fatigue are predominant factors that improve during erenumab treatment
- Patients reported improvements in emesis, allodynia and odor sensitivity to be most pronounced

CONCLUSION

- Even though limitations are evident due to comparison of two cohorts, these analyses indicate differences and overlaps in the patients and physicians perception of therapy outcomes in migraine treatment
- Patients report a higher reduction of monthly migraine days, physicians report a higher reduction of days with acute medication use
- Physicians and patients see an early onset of treatment effect after first or second injection, improved quality of life is very high amongst responders in both cohorts
- The comparison highlights the importance of considering both sides to generate comprehensive real-world evidence

DISCLOSURE

Charly Gaul has received personal compensation for consulting, serving on a scientific advisory board, speaking, or other activities with Allergan Pharma, Ratiopharm, Boehringer Ingelheim Pharma, Lilly, Novartis Pharma, Destin Arzmittel, Cerbotec, Bayer vital, Hormosan Pharma, electroCore, Ractin Bendisier, and Teva
 Andreas Straube has received personal compensation for consulting, serving on a scientific advisory board, speaking, or other activities with Allergan, Allergoson, Bayer, electroCore, Eli Lilly, Novartis, Sanofi, TEVA. Dr. Straube has received research support from Novartis Pharma.
 Philipp Stude has received honoraria for consulting, speaking or other activities from Allergan, Eli Lilly, Hormosan, Novartis, TEVA.
 Heike Israel-Willner - received honoraria for consulting and lectures within the past 3 years from Allergan Pharma, Novartis Pharma, Destin Arzneimittel and Teva.
 Mirja Koch and Katrin Schuh are employees at Novartis Pharma GmbH.
 This study was funded by Novartis Pharma GmbH, Nuremberg, Germany.